

MADE IN GERMANY

We recommend the use of our duplicating silicones, 1:1.
Available as:

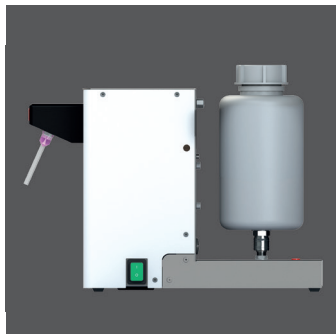
- 1 kg, component A / B
- 6 kg, component A / B
- 25 kg, component A / B



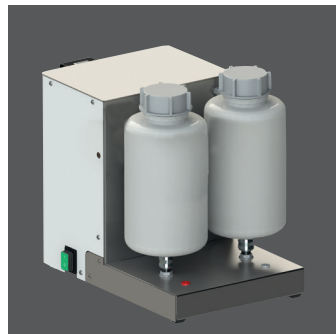
WaSil soft, 6 kg cask,
hardness Shore A: 16-18



WaSil speed, 6 kg cask,
hardness Shore A: > 24



Convenient: The containers for the A and B components can be fitted very easy to the unit by the quick couplings, Adapter-sets for various cask sizes are available as accessories



Single-handed operation

Wassermann is a medium-sized, owner-operated company with head office in Hamburg. We design and produce high-quality technical devices in Germany. Our main users are dental laboratories, dental clinics and various industrial areas worldwide.

Why a Wassermann product?

Wassermann products are manufactured from high-quality materials and the proportion of plastics used is intentionally kept as low as possible. Our devices are known for their suitability for daily use, functionality and longevity. As a result, the users place high levels of trust in the Wassermann brand. We feel it is our duty to support our customers on a daily basis when it comes to safety, service and productivity. Technological perfection, optimum quality and especially sustainability are the benchmarks we set. Thanks to the combination of these values, the family-owned company, since its establishment in 1927, has gained worldwide recognition as a manufacturer of high-quality products.



Further information are available on our website at www.wassermann.hamburg



/WassermannDentalmaschinen

Your Dental Dealer _____

Sidomix II



Dosing and Mixing Unit



Wassermann Dental-Maschinen GmbH
Rudorffweg 15-17 · 21031 Hamburg · Germany
Phone: +49 (0)40 730 926-20/ -24 · Fax: +49 (0)40 730 37 24
export@wassermann-dental.com · www.wassermann.hamburg
www.facebook.com/WassermannDentalmaschinen

Dosing and Mixing Unit

Sidomix II

The Sidomix II is a dosing and mixing unit for addition-vulcanizing duplicating silicones of low viscosity. A regulable bypass circuit ensures an optimum mixing ratio. The mixing ratio can be adjusted very easily and quickly by the user with the help of a convenient quantity flow control. The desired components are mixed 1:1 and dosed correctly – automatically, totally homogenous and fully bubble-free.



High quality construction,
plastic powder coated housing
made of stainless steel

The mixing head with separate
outlets makes mixing of
components impossible – even
when attaching and removing
the mixing cannulas

Material and time saving with
loss-free filling of several flasks
with one mixing cannula

Major Features

- **Included in delivery:**
Set material cask with quick fitting coupling, 2 x 2 liter
Mixing canulas, pink, 10 pcs.

Accessories	Item no.
Set material cask with quick fitting coupling, 2 x 2 liter	172640
Stand small for duplicating silicones, 2 x 6 kg-cask	172631
Stand tall for duplicating silicones, 2 x 25 kg-cask	172632
Connecting tubes cpl., 2 pcs.	172633
Adapter-set for duplicating silicones, 2 x 1 kg-cask	172634
Adapter-set for duplicating silicones, 2 x 6 kg-cask	172636
Mixing canulas 1:1, inner Ø 5.4 mm, pink, 100 pieces	622002
Consumable materials Duplicating silicone, 1:1	
WaSil soft, hardness Shore A: 16-18, 2 x 1 kg, component A / B	656060
WaSil soft, hardness Shore A: 16-18, 2 x 6 kg, component A / B	656061
WaSil soft, hardness Shore A: 16-18, 2 x 25 kg, component A / B	656062
WaSil speed, hardness Shore A: > 24, 2 x 1 kg, component A / B	656070
WaSil speed, hardness Shore A: > 24, 2 x 6 kg, component A / B	656071
WaSil speed, hardness Shore A: > 24, 2 x 25 kg, component A / B	656072
Sidomix II	
Item no. 172980	
Voltage	220–240 V / 50/60 Hz
Power consumption	1.6 A
Output	260 W
W x H x D max.	275 x 340 x 440 mm
W x H x D (housing)	242 x 305 x 360 mm
Weight	242 x 305 x 360 mm
Gewicht	11.5 kg
Sound level	≤ 70 dB (A)