

Wassermann offers you a comprehensive and perfectly coordinated product portfolio.

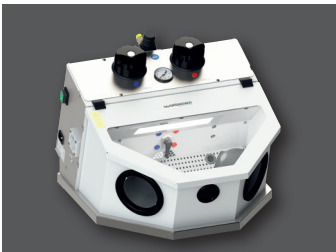
Our low pressure suction units in combination with the suction box or the fine blasting units guarantee excellent health protection and the highest degree of profitability. We also supply the appropriate blasting material.



Cemat-4 II
(also available as 3 chamber version and 2 chamber version)



Gobi Comfort-4
(also available as 3 chamber version and 2 chamber version)



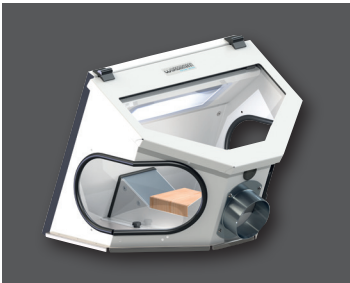
Gobi Classic



Puna II



Suction Box Compact III, basic equipment, with optional mounting possibilities for the extractor nozzle in the front or in the rear



MADE IN GERMANY

Wassermann is a medium-sized, owner-operated company with head office in Hamburg. We design and produce high-quality technical devices in Germany. Our main users are dental laboratories, dental clinics and various industrial areas worldwide.

Why a Wassermann product?

Wassermann products are manufactured from high-quality materials and the proportion of plastics used is intentionally kept as low as possible. Our devices are known for their suitability for daily use, functionality and longevity. As a result, the users place high levels of trust in the Wassermann brand. We feel it is our duty to support our customers on a daily basis when it comes to safety, service and productivity. Technological perfection, optimum quality and especially sustainability are the benchmarks we set. Thanks to the combination of these values, the family-owned company, since its establishment in 1927, has gained worldwide recognition as a manufacturer of high-quality products.



Further information are available on our website at www.wassermann.hamburg



/WassermannDentalmaschinen

Your Dental Dealer _____

SG-1/2 D



Suction Unit



Wassermann Dental-Maschinen GmbH
Rudorffweg 15-17 · 21031 Hamburg · Germany
Phone: +49 (0)40 730 926-20/ -24 · Fax: +49 (0)40 730 37 24
export@wassermann-dental.com · www.wassermann.hamburg
www.facebook.com/WassermannDentalmaschineng

Suction Unit SG-1/2 D

Flexible, compact and really powerful: The SG-1/2 D is a multi-function allround unit for many purposes. It works with Wassermann's reliable low pressure principle; i.e. with suction at very low air speed. The advantage: relaxed and nearly noiseless working conditions. A further advantage is the high suction volume, where the hands will not become cold even in continuous operation. The fan motor is a maintenance-free squirrel-cage motor almost free from wear.

Not included, please order separately:
PVC-hose Ø 75 mm, various lengths available,
see flyer "Accessories for suction technology"



Major Features

- Universal suction unit that works with the low pressure principle
- Multifunctional use – from polishing trough to fine blasting units
- Completely vibration-free and low-noise running
- Automatic switch-off – also of connected appliances – at filter saturation point
- **Included in delivery:**
Supply line with switchable shock proof plug
Conductance sheet
Micro fine dust filterbag (yellow), dust class M

| Accessories | Item no. |
|---|----------|
| Spare micro fine dust filterbag (yellow) small, dust class M, 1 set = 4 pieces | 611020 |
| Spare filterbag for plaster (white) small, class 1 / class 2, 1 set = 3 pieces | 611017 |

For further accessories (e.g. PVC-hoses)
please see flyer "Accessories Suction Technology".

| SG-1/2 D | Item no. 140997 |
|-------------------------------|--------------------------------------|
| Voltage | 220–240 V / 50/60 Hz |
| Power consumption | 105 W |
| Plug socket power consumption | max. 2 A |
| Output | 0.5 A |
| W x H x D | 410 x 460 x 185 mm |
| Weight | 12.7 kg |
| Sound level | 61 dB(A) |
| Suction capacity | 360 m ³ /h (free-blowing) |