

MADE IN GERMANY

Wassermann is a medium-sized, owner-operated company with head office in Hamburg. We design and produce high-quality technical devices in Germany. Our main users are dental laboratories, dental clinics and various industrial areas worldwide.

Why a Wassermann product?

Wassermann products are manufactured from high-quality materials and the proportion of plastics used is intentionally kept as low as possible. Our devices are known for their suitability for daily use, functionality and longevity. As a result, the users place high levels of trust in the Wassermann brand. We feel it is our duty to support our customers on a daily basis when it comes to safety, service and productivity. Technological perfection, optimum quality and especially sustainability are the benchmarks we set. Thanks to the combination of these values, the family-owned company, since its establishment in 1927, has gained worldwide recognition as a manufacturer of high-quality products.

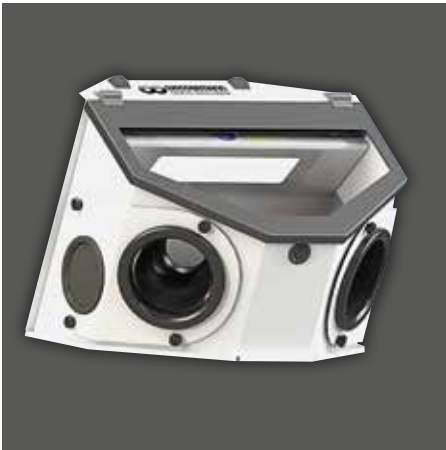


Further information are available on our website at www.wassermann.hamburg

Your Dental Dealer _____



Suction Box Compact II, basic equipment with large openings, spacious internal volume and extractor nozzle in the rear



Suction Box Compact II with accessories: Set of safety covers with sleeves and separate cuts for the handpiece



Suction Box Compact II with accessories: Set of arm rests for working without tiring

Suction Box Compact II



Suction Box



Wassermann Dental-Maschinen GmbH
 Rudorffweg 15-17 · 21031 Hamburg · Germany
 Phone: +49 (0)40 730 926-0 · Fax: +49 (0)40 730 37 24
info@wassermann-dental.com · www.wassermann.hamburg

Suction Box

Suction Box Compact II

The **Suction Box Compact II** offers a nearly dust-free operation, and thus meets modern requirements for workplace health and safety. Without the interference of dust, splinters or fumes, it allows the user to work efficiently and relaxed directly on the object. On request the openings for the hands can be additionally sealed with safety covers made of metal. A particular advantage are the two-sided, separate cuts for the handpiece and the sleeves with a lot of moving area and a high standard of hygiene.



Major Features

- Ergonomic shape for optimal physical carriage
- High safety standard: Protection against splinters, dust and fumes
- Tilt and skid resistant
- Quality magnifier, arm rests and safety covers optionally available
- Perfectly matched to the combination with our low-pressure suction units **SG-10**, **SG-1/1** and **SG-1/2 D**
- **Included in delivery:**
Suction Box Compact II with daylight LED illumination and extractor nozzle in the rear
An extractor nozzle in the front is available on request.

Accessories	Item no.
Magnifying glass	143251
Set of arm rests	143303
Set of safety covers	143305
Various adapters Ø 75 mm (inner) available on request	- - -

Suction-Box Compact II	Item no. 143370
Voltage	220–240 V / 50/60 Hz
Power consumption	0.1 A
Output	15 W
W x H x D	370 x 310 x 345 mm
Weight	5.5 kg
Extractor nozzle	Ø 75 exterior, in the rear (available on request: extractor nozzle in the front, Ø 60 mm exterior)