

**MADE IN GERMANY**

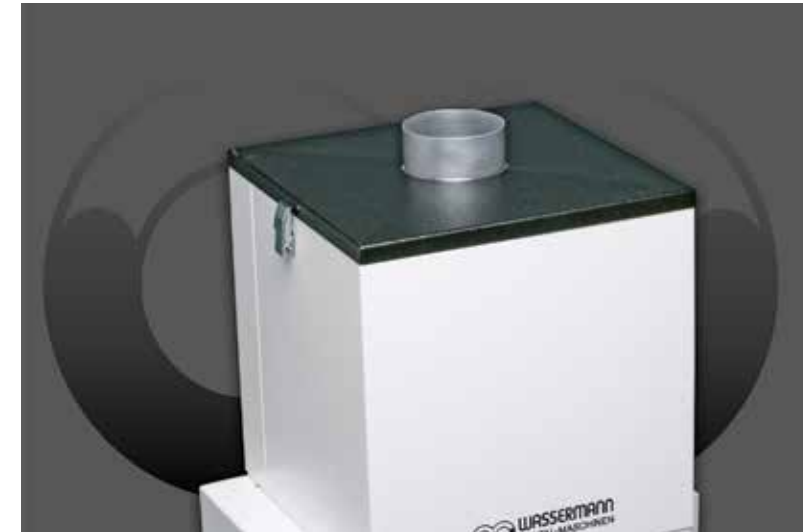
Wassermann is a medium-sized, owner-operated company with head office in Hamburg. We design and produce high-quality technical devices in Germany. Our main users are dental laboratories, dental clinics and various industrial areas worldwide.

**Why a Wassermann product?**

Wassermann products are manufactured from high-quality materials and the proportion of plastics used is intentionally kept as low as possible. Our devices are known for their suitability for daily use, functionality and longevity. As a result, the users place high levels of trust in the Wassermann brand. We feel it is our duty to support our customers on a daily basis when it comes to safety, service and productivity. Technological perfection, optimum quality and especially sustainability are the benchmarks we set. Thanks to the combination of these values, the family-owned company, since its establishment in 1927, has gained worldwide recognition as a manufacturer of high-quality products.



**SG-10**



**Suction Unit**



SG-10 innovative filter concept, wide range of filters available



SG-10 base with module activated carbon filter



SG-10 base with module filter add-on



SG-10 modular filter system for different applications



Further information are available on our website at [www.wassermann.hamburg](http://www.wassermann.hamburg)

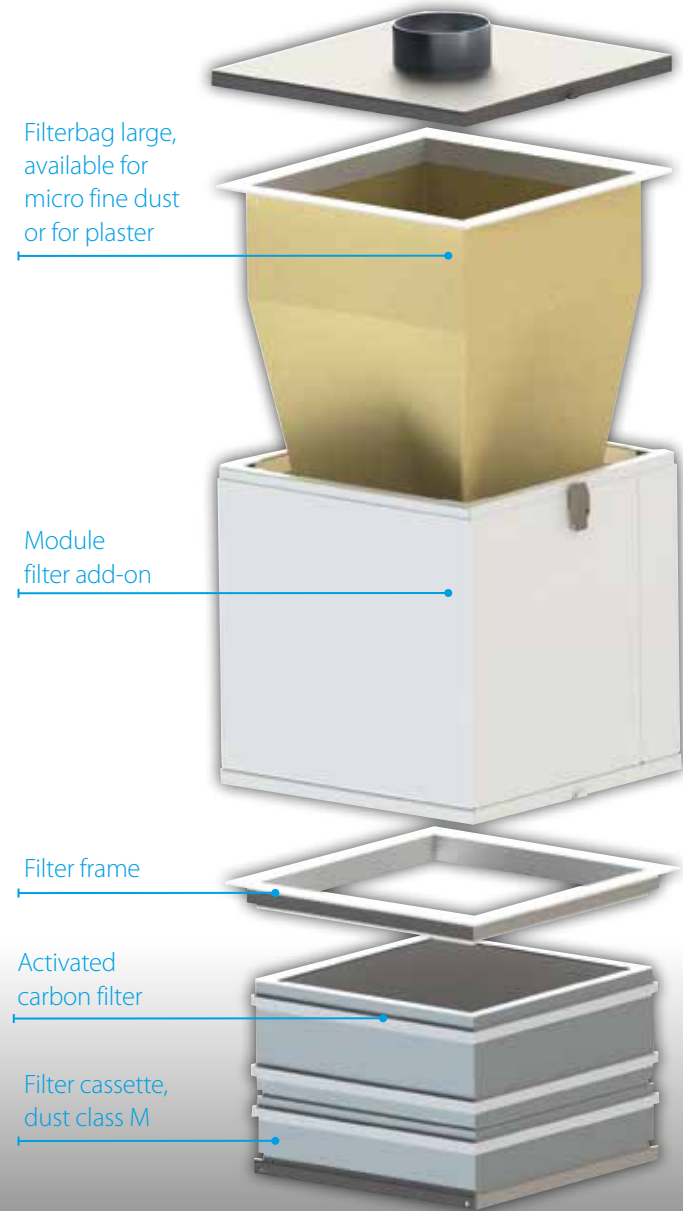
Your Dental Dealer \_\_\_\_\_



Wassermann Dental-Maschinen GmbH  
Rudorffweg 15-17 · 21031 Hamburg · Germany  
Phone: +49 (0)40 730 926-0 · Fax: +49 (0)40 730 37 24  
info@wassermann-dental.com · www.wassermann.hamburg

# Suction Unit SG-10

Safety and health in the workplace due to the innovative filter concept, wide range of filters available: From the activated carbon filter to the large volume plaster pre-filter



The **SG-10** is a multi-function allround unit for many purposes from polishing motors to blasting units. As all Wassermann suction units which works with the low-pressure principle, it sucks up the maximum amount of air at a very low air speed. The advantage: Relaxed and quiet working conditions. A further advantage is the high suction volume, where the hands do not become cold even in continuous operation. The fan motor is a squirrel-cage motor almost free from wear and maintenance-free.

The SG-10 suction unit base, comes as standard with filterbag small, available for micro fine dust or for plaster (for activated carbon mode this filter bag has to be removed and the activated carbon filter module is inserted into the SG-10 base instead)

Power control is infinitely variable using the control element



## Major Features

- Notably flexible and powerful universal suction unit
- Suitable for continuous operation, high-quality finish
- Filter saturation display
- Easy-to-replace filter system
- Recommended version for the Cemat-NT and Puna blasting units
- **Included in delivery:**  
Supply line with switchable shock proof plug  
Speed regulator, fitted  
Micro fine dust filterbag (yellow) small, dust class M\*
- **To retrofit the SG-10 standard version with an activated carbon filter the following item numbers are necessary:**  
140410 Module filter add-on (without filter)\*\*  
610074 Micro fine dust filterbag (yellow) tall, dust class M\*\*  
140424 Module activated carbon filter: Activated carbon filter (AKM 6-ply), filter cassette (dust class M), filter housing (no fig.), filter frame\*\*

\*SG-10 basic version, \*\*SG-10 activated carbon version

Accessories	Item no.
Spare micro fine dust filterbag (yellow) small, dust class M, 1 set = 4 pieces	611010*
Spare filterbag for plaster (white) small, class 1 / class 2, 1 set = 4 pieces	611018*
Spare micro fine dust filterbag (yellow) large, dust class M	610074**
Spare filterbag for plaster (white) large, class 1 / class 2	610073**
Spare activated carbon filter, cpl., AKM 6-ply	140436**
Spare filter cassette, cpl., dust class M	140435**
SG-10 basic version	Item no. 140988
SG-10 activated carbon version	Item no. 140987
Voltage	220–240 V / 50/60 Hz
Power consumption	0.75 A
Output	110 W
W x H x D SG-10 basic version	348 (without plug) x 423 x 270 mm
W x H x D SG-10 activated carbon version	348 (without plug) x 672 x 270 mm
Weight depends on version	8.2 kg
Sound level	≤ 70 dB (A)
Suction capacity	600 m <sup>3</sup> /h (free-blowing)
Extractor nozzle	Ø 75 mm exterior