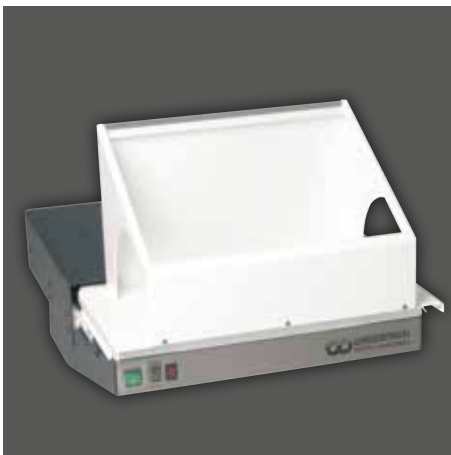


MADE IN GERMANY

Wassermann is a medium-sized, owner-operated company with head office in Hamburg. We design and produce high-quality technical devices in Germany. Our main users are dental laboratories, dental clinics and various industrial areas worldwide.

Why a Wassermann product?

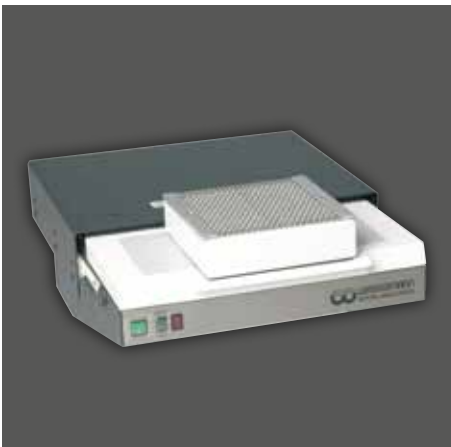
Wassermann products are manufactured from high-quality materials and the proportion of plastics used is intentionally kept as low as possible. Our devices are known for their suitability for daily use, functionality and longevity. As a result, the users place high levels of trust in the Wassermann brand. We feel it is our duty to support our customers on a daily basis when it comes to safety, service and productivity. Technological perfection, optimum quality and especially sustainability are the benchmarks we set. Thanks to the combination of these values, the family-owned company, since its establishment in 1927, has gained worldwide recognition as a manufacturer of high-quality products.



LSG-02 with universal extractor hood



LSG-02 with additional drawer



LSG-02 with activated carbon filter

LSG-02 DE and LSG-02 D



Suction Units



Further information are available on our website at www.wassermann.hamburg

Your Dental Dealer _____



Wassermann Dental-Maschinen GmbH
 Rudorffweg 15-17 · 21031 Hamburg · Germany
 Phone: +49 (0)40 730 926-0 · Fax: +49 (0)40 730 37 24
info@wassermann-dental.com · www.wassermann.hamburg

Suction Drawers

LSG-02 DE & LSG-02 D

The fully developed suction drawer LSG-02 is absolutely reliable and is designed precisely for the typical operations in laboratories. The unit starts running automatically when the stand-by mode is switched on and as soon as the drawer is pulled out. If a motorhandpiece is connected to the suction unit it will start running only when the suction drawer is pulled out. At the same time, the motorhandpiece will be turned off when the drawer is closed – hence it is impossible to work without any suction.



Major Features

- Comfortable and durable single post suction with high degree of effectiveness
- Switches off automatically at filter saturation point – also all peripheral appliances
- Installation without difficulty, easy to operate, fast filter change
- Practical accessory variations with possibility of later assembly: Gold and debris drawer optionally available as additional drawer, as well as a long-life monomer activated carbon filter
- **LSG-02 DE:** In addition with a practical automatic switch-on device for the automatic start of the suction by the motor handpiece and with an integrated run-on device for even more high safety and health in the workplace
- **Included in delivery:**
Safety screen, acrylic glass 195 x 176 x 3 mm
Micro fine dust filterbag (yellow), dust class M
Supply line

Accessories	Item no.
Additional drawer (can also be retrofitted)	145005
Mounting frame for KaVo tables	145006
Universal extractor hood with base plate	145200
Module activated carbon filter, cpl.	145240
Spare activated carbon filter	610056
Spare micro fine dust filterbag (yellow), dust class M, 1 set = 3 pieces	611015
Spare filterbag for plaster (white), class 1 / class 2, 1 set = 3 pieces	611017

LSG-02 DE	Item no. 145997
LSG-02 D	Item no. 145998
Voltage	220–240 V / 50/60 Hz
Power consumption	0.5 A
Power consumption peripheral appliance	max. 2 A
Output	105 W
W x H x D/D max.	445 x 190 x 505 mm / 720 mm
Weight LSG-02 DE	17.5 kg
Weight LSG-02 D	17.2 kg
Sound level	61 dB(A)
Suction capacity	360 m ³ /h (free-blowing)