

**MADE IN GERMANY**

Wassermann is a medium-sized, owner-operated company with head office in Hamburg. We design and produce high-quality technical devices in Germany. Our main users are dental laboratories, dental clinics and various industrial areas worldwide.

**Why a Wassermann product?**

Wassermann products are manufactured from high-quality materials and the proportion of plastics used is intentionally kept as low as possible. Our devices are known for their suitability for daily use, functionality and longevity. As a result, the users place high levels of trust in the Wassermann brand. We feel it is our duty to support our customers on a daily basis when it comes to safety, service and productivity. Technological perfection, optimum quality and especially sustainability are the benchmarks we set. Thanks to the combination of these values, the family-owned company, since its establishment in 1927, has gained worldwide recognition as a manufacturer of high-quality products.



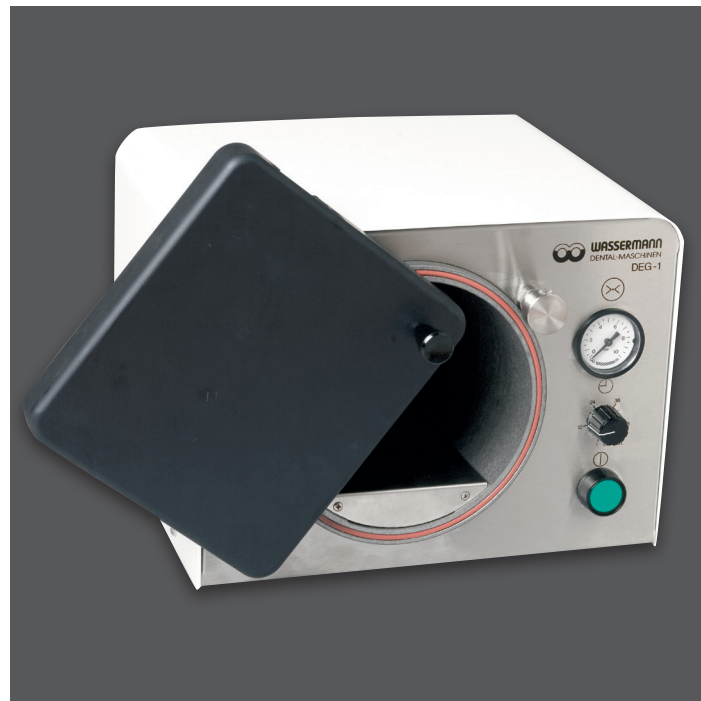
**DEG-1**



**Compactor**



Designed to take several muffles at the same time



Rotatable door with quick fastener



Further information are available on our website at [www.wassermann.hamburg](http://www.wassermann.hamburg)



/WassermannDentalmaschinen

Your Dental Dealer \_\_\_\_\_



Wassermann Dental-Maschinen GmbH  
Rudorffweg 15-17 · 21031 Hamburg · Germany  
Phone: +49 (0)40 730 926-20/ -24 · Fax: +49 (0)40 730 37 24  
export@wassermann-dental.com · www.wassermann.hamburg  
www.facebook.com/WassermannDentalmaschinen

# Compactor DEG-1

The DEG-1 is a high-power compactor for hardening embedding and silicone duplicating materials compresses the residual air completely so it create a dense, homogeneous product. Depending on the inlet pressure, up to 6.0 bar can be achieved and afterwards be reduced as desired.

## Major Features

- For a dense, homogeneous structure and smooth rough castings
- Integrated stainless steel plates, designed for multiple muffles
- Pressure control valve for maximum safety
- Non-return valve for steady operating pressure
- Automatic venting: After the set time has expired, the pressure chamber will vent automatically
- **Incl. in delivery:**
  - Compressed air hose, 2 m
  - Supply line



Pressure chamber with quick fastener

Automatic timer up to 60 minutes

Pressure switch: The pressure-embedding process can be interrupted at any time

Accessories	Item no.
Compressed air hose per meter	320026
<b>DEG-1</b>	<b>Item no. 180999</b>
Voltage	220–240 V / 50/60 Hz
Power consumption	0.1 A
Output	20 W
W x H x D	300 x 230 x 380 mm
Weight	13.2 kg
Sound level	≤ 70 dB (A)
Compressed air connection	min. 3.5 bar
Operating pressure	max. 6 bar
Pressure chamber H x D	130 x 250 mm