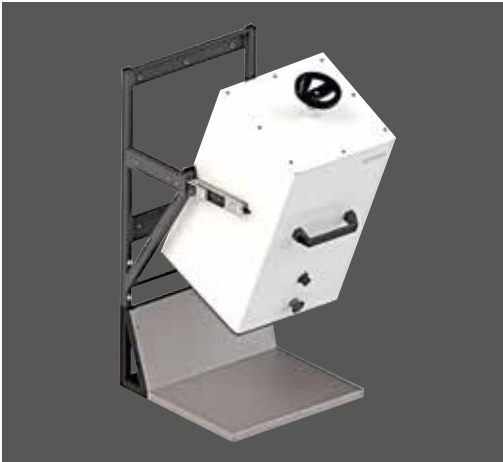




Table-top frame available as accessory



180°-tipping mechanism



Easy and time-saving filling

MADE IN GERMANY

Wassermann is a medium-sized, owner-operated company with head office in Hamburg. We design and produce high-quality technical devices in Germany. Our main users are dental laboratories, dental clinics and various industrial areas worldwide.

Why a Wassermann product?

Wassermann products are manufactured from high-quality materials and the proportion of plastics used is intentionally kept as low as possible. Our devices are known for their suitability for daily use, functionality and longevity. As a result, the users place high levels of trust in the Wassermann brand. We feel it is our duty to support our customers on a daily basis when it comes to safety, service and productivity. Technological perfection, optimum quality and especially sustainability are the benchmarks we set. Thanks to the combination of these values, the family-owned company, since its establishment in 1927, has gained worldwide recognition as a manufacturer of high-quality products.



Further information are available on our website at www.wassermann.hamburg



/WassermannDentalmaschinen

Your Dental Dealer

Blank box for dental dealer information

WGS-25 W II



Plaster Storage Bin



Wassermann Dental-Maschinen GmbH
Rudorffweg 15-17 · 21031 Hamburg · Germany
Phone: +49 (0)40 730 926-20/ -24 · Fax: +49 (0)40 730 37 24
export@wassermann-dental.com · www.wassermann.hamburg

Plaster Storage Bin WGS-25 W II

Wall-mounted Model

A WGS bin keeps plaster, embedding materials and pumice powder dry and protected from impurities. The electronic vibrator guarantees even distribution of all materials, without lumps forming. The established storage and dosing system is available as wall-mounted model. An extremely solid table-top frame is available as accessory.



Can be tilted at 180° for easy refilling

Scratch-resistant plastic powder coating for easy cleaning

Very sturdy steel construction

Fine control of material flow thanks to variable vibration intensity

Major Features

- The established bin for all plasters, embedding materials and pumice powder
- Optimised for use with Wassermann DSW-2 and DSW-2/4 K dosing scales
- **Included in delivery:**
WGS-25 W II Wall Model incl. fastening material

Accessories	Item no.
Table-top frame incl. fastening material	166115
Plaster Storage Bin WGS-25 W II, Wall-mounted Modell	
Item no.	166997
Voltage	220–240 V / 50/60 Hz
Power consumption	0.3 A
Output	70 W
Dimensions Wall-mounted model	W 445 x H 910 x D 415 mm / D max. 810 mm
Dimensions Wall-mounted model incl. table-top frame	W 445 x H 1065 x D 415 mm / D max. 810 mm
Weight WGS-25 W II	45 kg
Weight table-top frame (accessory)	6.7 kg
Sound level	≤ 70 dB (A)

