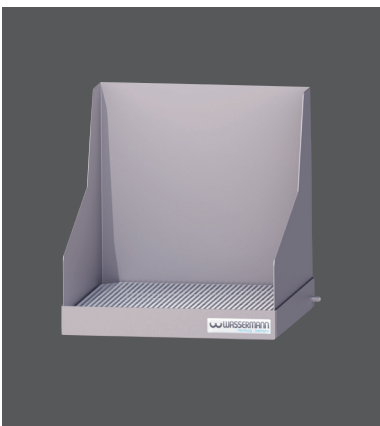
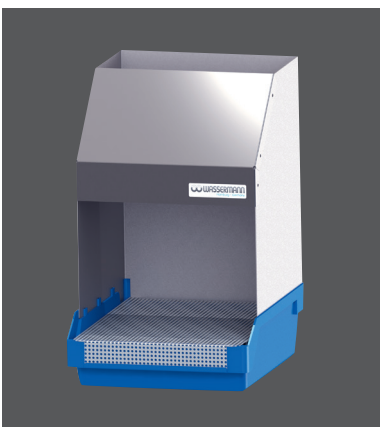




Steam gun



Available as accessory:
Splash protection entirely
made of stainless steel,
open at the front and top,
easy to clean component
parts (splash protection,
basement, strainer insert)



Available as accessory:
Stainless steel splash
protection with fixed hood
(chimney effect), easy to
clean component parts
(splash protection, strainer
insert, plastic basement)

MADE IN GERMANY

Wassermann is a medium-sized, owner-operated company with head office in Hamburg. We design and produce high-quality technical devices in Germany. Our main users are dental laboratories, dental clinics and various industrial areas worldwide.

Why a Wassermann product?

Wassermann products are manufactured from high-quality materials and the proportion of plastics used is intentionally kept as low as possible. Our devices are known for their suitability for daily use, functionality and longevity. As a result, the users place high levels of trust in the Wassermann brand. We feel it is our duty to support our customers on a daily basis when it comes to safety, service and productivity. Technological perfection, optimum quality and especially sustainability are the benchmarks we set. Thanks to the combination of these values, the family-owned company, since its establishment in 1927, has gained worldwide recognition as a manufacturer of high-quality products.



Further information are available on our website at
www.wassermann.hamburg



/WassermannDentalmaschinen

Your Dental Dealer _____

Wasi-Steam Classic II



Steam Cleaner

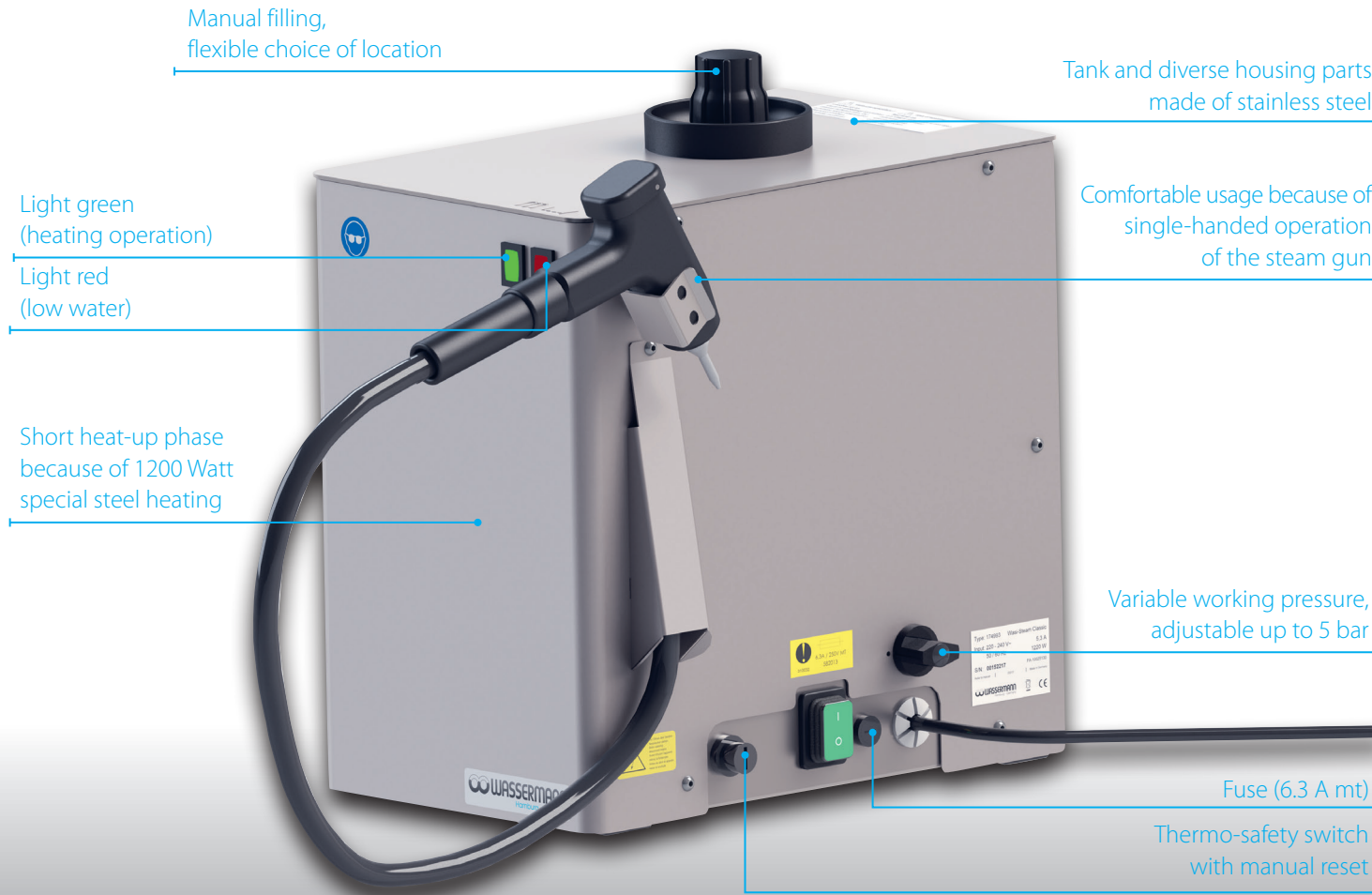


Wassermann Dental-Maschinen GmbH
Rudorffweg 15-17 · 21031 Hamburg · Germany
Phone: +49 (0)40 730 926-20/ -24 · Fax: +49 (0)40 730 37 24
export@wassermann-dental.com · www.wassermann.hamburg
www.facebook.com/WassermannDentalmaschinen

Steam Cleaner

Wasi-Steam Classic II

Compact format, strong performance: The **Wasi-Steam Classic II** is the perfect solution when there is little space and big demand. With its variable work pressure of up to 5 bar it offers in particular the multistation user a gentle but quick and thorough cleaning of all small parts.



Major Features

- Perfect for use with limited space
- Short heat-up phase because of 1200 Watt-special steel heating
- Gentle and quick to use, thorough results
- High safety because of protection against dry running
- Wall mounting possible, fastening set for wall mounting available as accessory

Accessories	Item no.
Splash protection entirely made of stainless steel W 250 x H 265 x D 255 mm, open at the front and top	174460
Splash protection, stainless steel, plastic basement W 235 x H 385 x D 294 mm, with fixed stainless steel hood	174360
Fastening set for wall mounting	174358
1 L lime remover	655002
Special nozzle Ø 2.5 mm (Spare basic nozzle Ø 1.2 mm, item no. 174100)	174352
Wasi-Steam Classic II stainless steel Wasi-Steam Classic II stainless steel white	Item no. 174996 #CCVA# Item no. 174996 #CCWH#
Voltage	220-240 V / 50/60 Hz
Power consumption	5.3 A (6.3 A medium-blowing-fuse)
Output	1220 W
W x H x D max. W x H x D (housing)	245 x 350 x 315 mm 200 x 305 x 310 mm
Weight	12.5 kg
Sound level	≤ 70 dB (A)
Working pressure	max. 5 bar
Steam temperature	approx. 158 °C (at 5 bar)
Boiler capacity	3.3 l
Safety class	IP 22



Wasi-Steam Classic II stainless steel Wasi-Steam Classic II stainless steel white

Other voltages on request · Technical changes reserved · 2021/02